

Supalux board withstands fire, moisture, heat and cold. Without budging.

We've created for you the perfect building board. A board you can use almost anywhere, and never have to worry about changes in the weather, the threat of fire, the effects of moisture or the ravages of time.

Supalux will remain unaffected. It's dimensional stability unquestioned. And its finish will stay as fresh as the day it's installed.

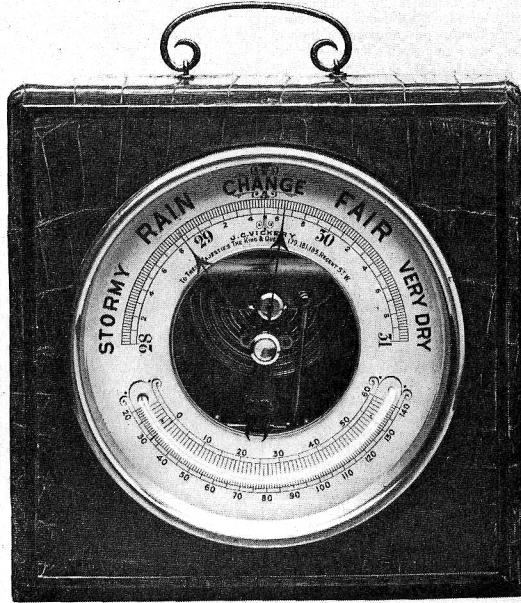
Supalux comes to you from Cape

Boards, the company with more fire protection experience in the building board industry than anyone. So it will come as no surprise to you that Supalux meets the country's most stringent fire protection requirements, without having any asbestos in it.

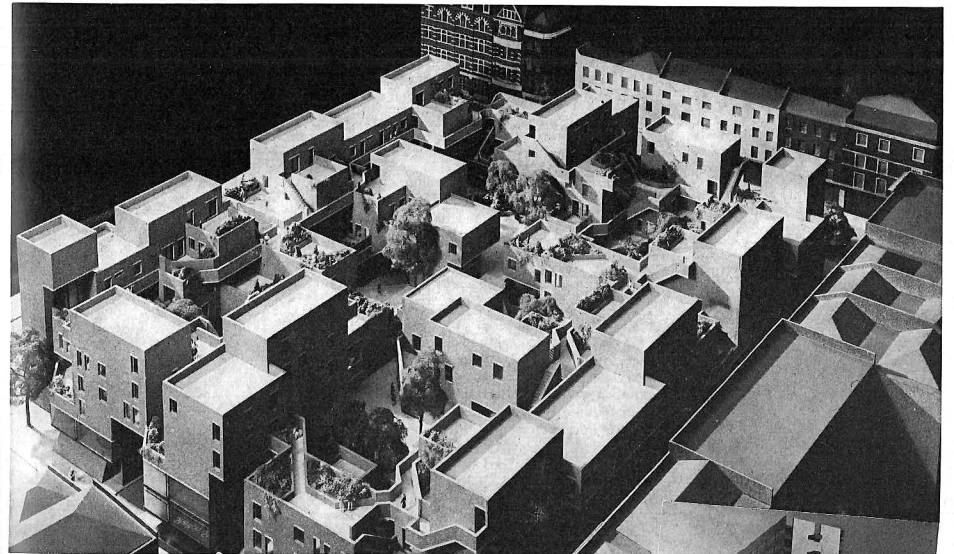
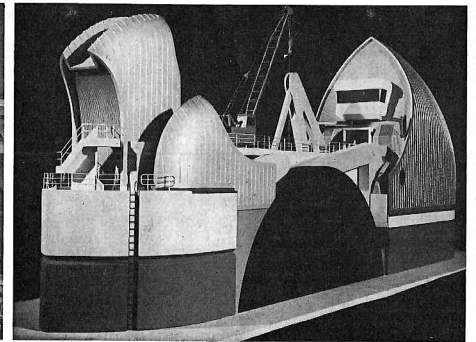
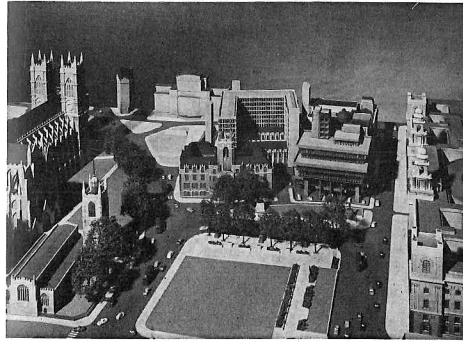
Get more information about Britain's finest building board. Contact Cape Boards and ask for the full facts on Supalux. Call Uxbridge 37111.

CAPE BOARDS
First for Fire Protection

Cape Boards and Panels Limited, Iver Lane, Uxbridge UB8 2JQ.



Quote CE6Q on Readers Enquiry Card



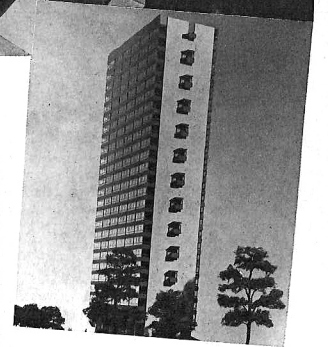
A MODEL LONDON

Last Friday Leslie Yeo retired as modelmaker to the GLC's department of architecture after 30 years. To mark the occasion a small exhibition of models made by his section has been mounted in the lobby to the north block at County Hall.

Some of the more spectacular models produced by the section, such as the seven-foot long Edmonton refuse incinerator, which requires a crane to move it, were not available for inclusion but the examples on display include models of schemes built, unbuilt and soon-to-be built. One of the most interesting in the "unbuilt" category is a model of Parliament Square with the proposed new government office building at Broad Sanctuary and Lasdun's proposed RICS

building close by. The government block, conspicuous by its closely spaced mullions, projecting bays and fortress-like ramparts, compares so badly with Lasdun's elegant and complex overhangs that it's a wonder the scheme survived even half a glance at the model.

Modelmaking techniques have changed over the years to accommodate new materials and ideas. Sponge trees have been superseded by trees made of strands of wire soldered together, plastics have replaced wood in many cases. But even now when a range of metal sections and model fittings can be obtained "off the shelf", a large measure of ingenuity and skill is still required of the modelmaker.



Top left: Parliament Square with the unbuilt government block in the centre and Lasdun's proposed RICS building to the right.
Top right: A pontoon for the Thames barrier.
Middle: Housing for Covent Garden.
Above: A 24-storey scissor-type maisonette block.