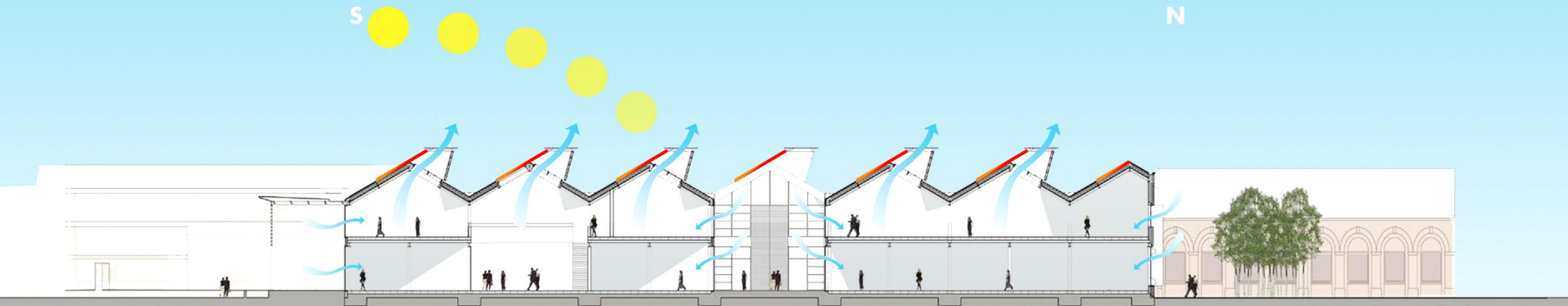
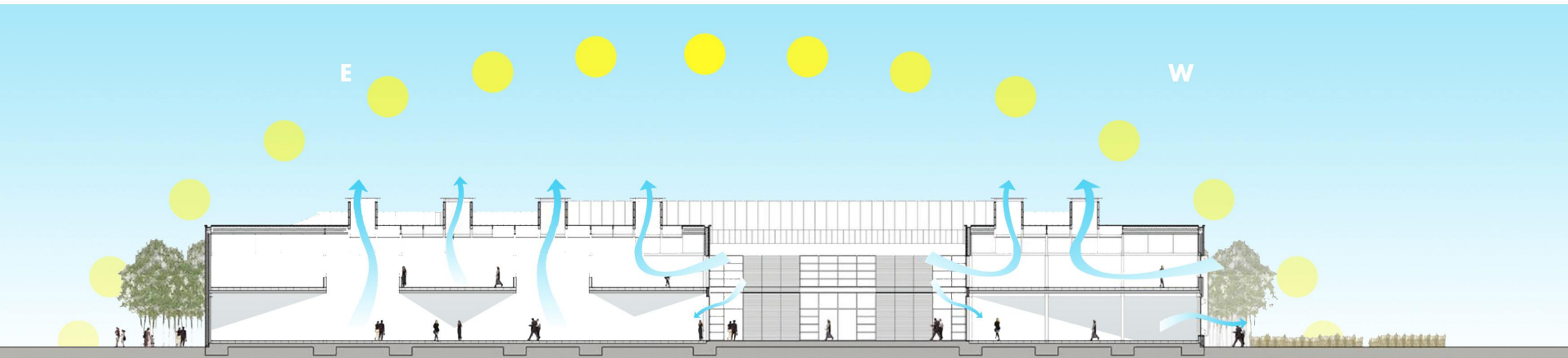


Sectional View

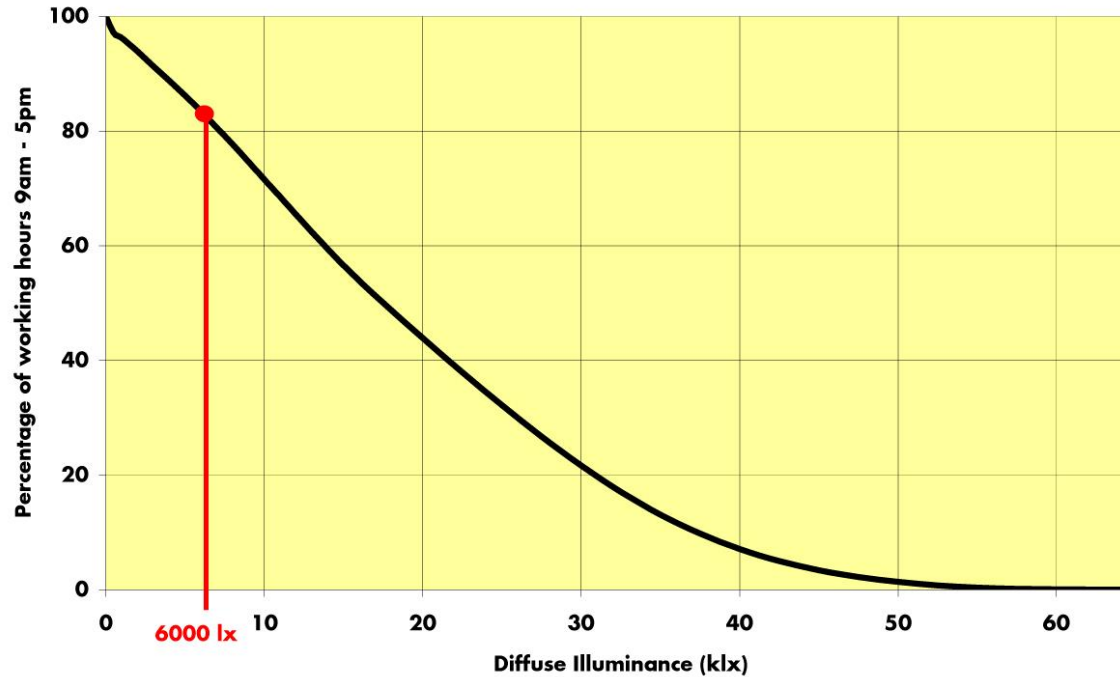


North-South Section



East-West Section

Daylight Availability

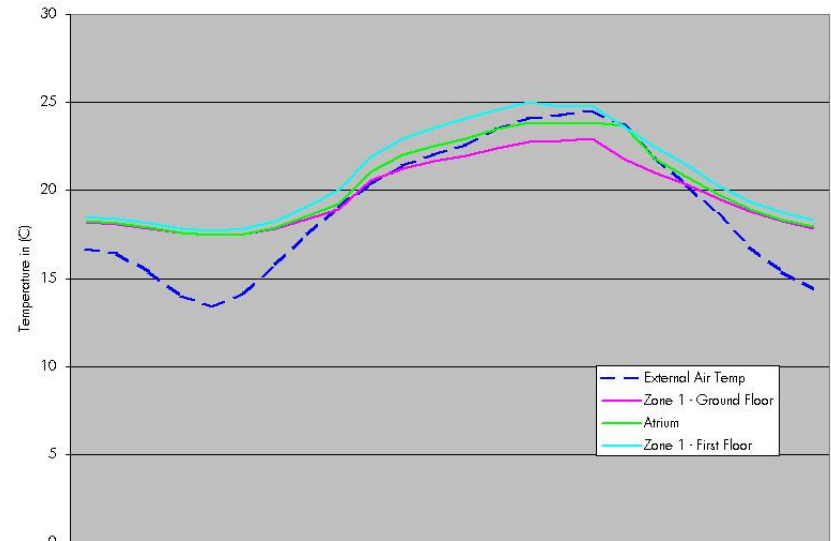
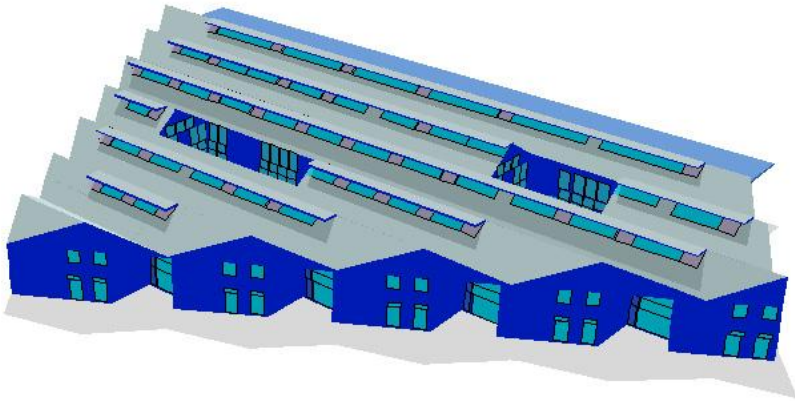


5% Daylight Factor - Predominantly Daylit => 300lux

2% Daylight Factor – Daylit

horizontal light = 2.5 x vertical light

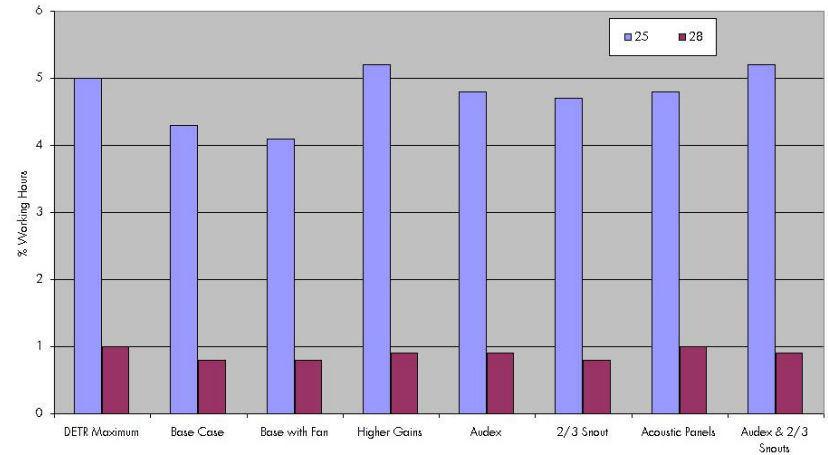
Thermal Modelling



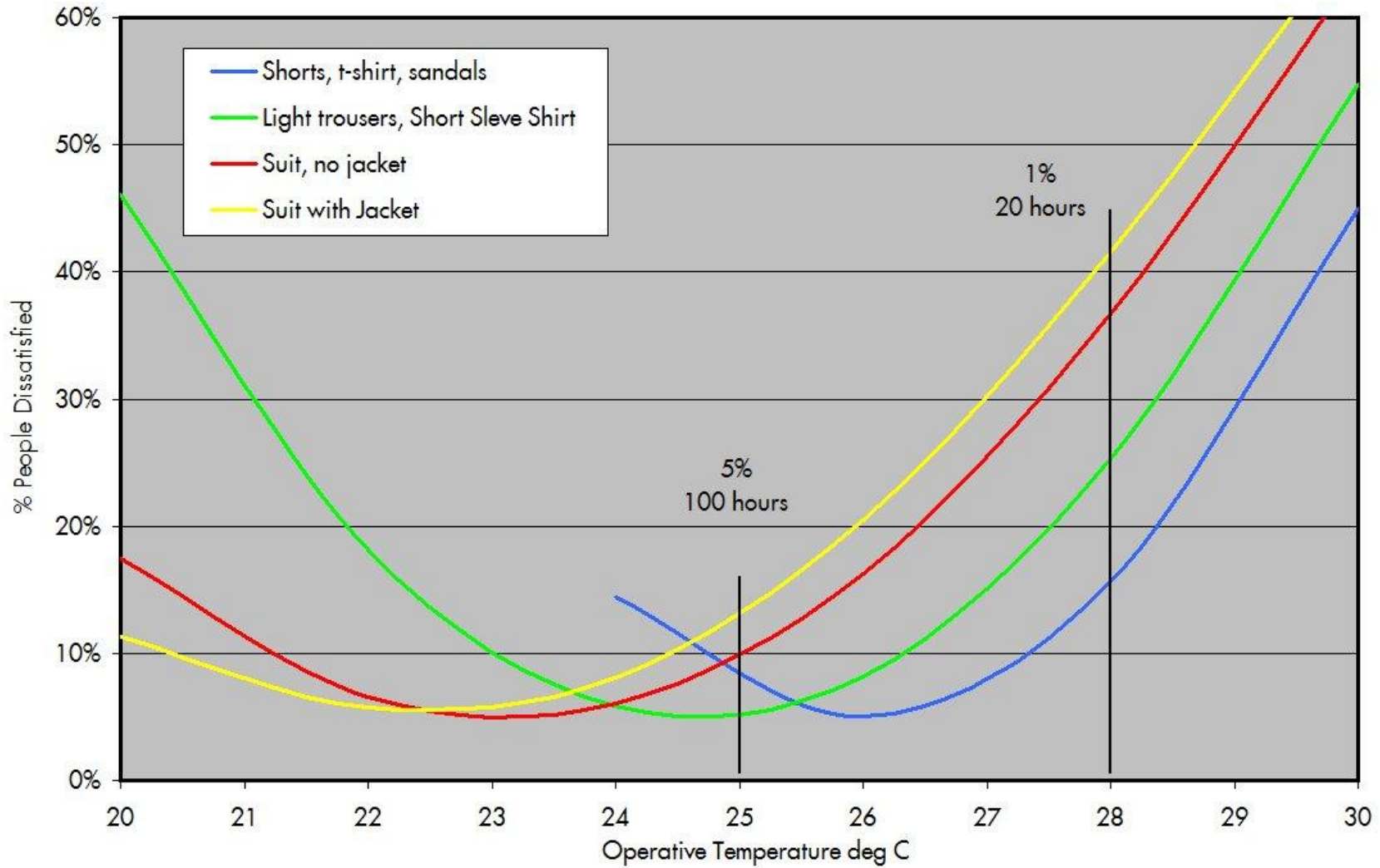
‘Reasonable Conditions’:

Less than 5% of working hours over 25°C

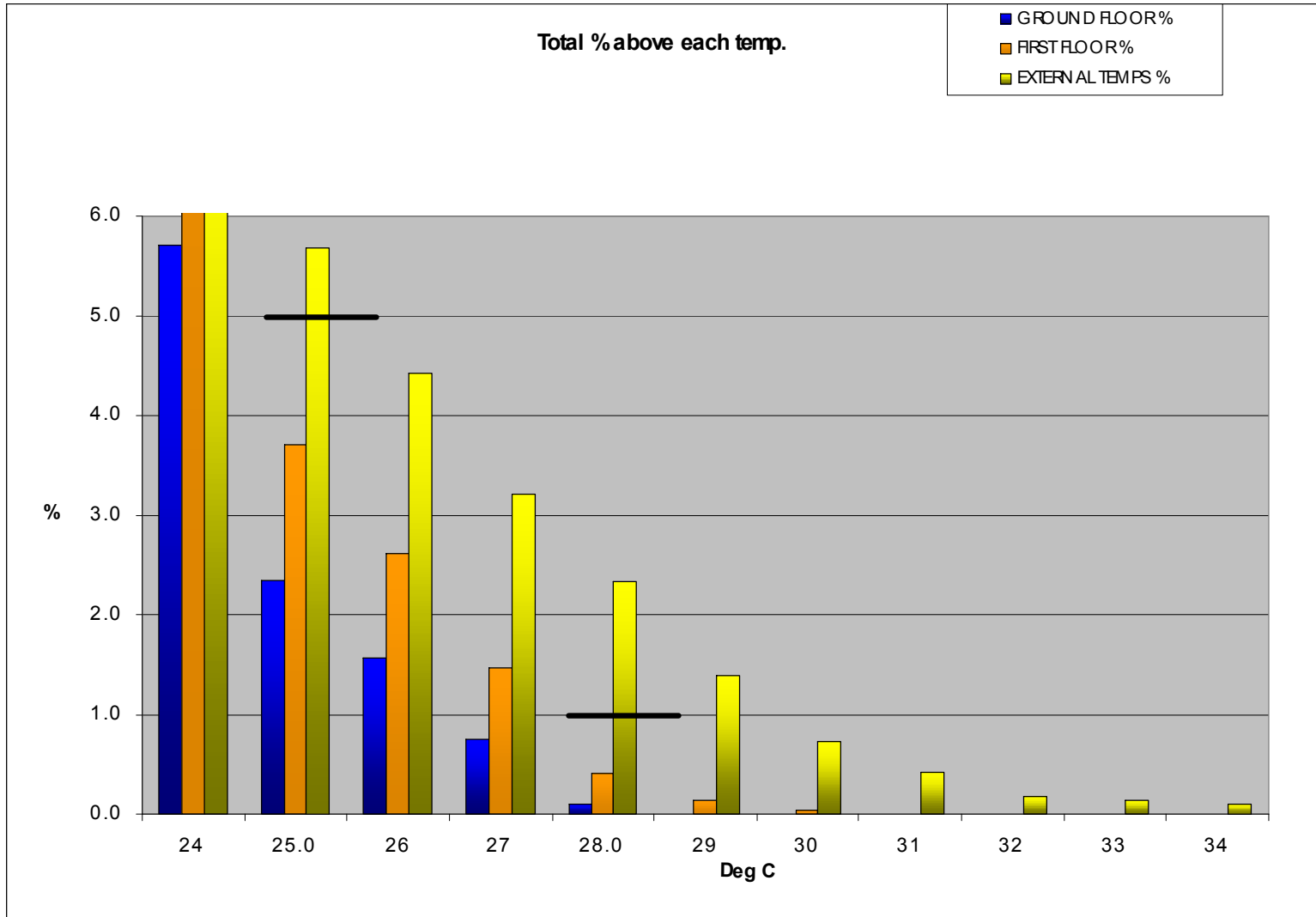
Less than 1% of working hours over 28°C



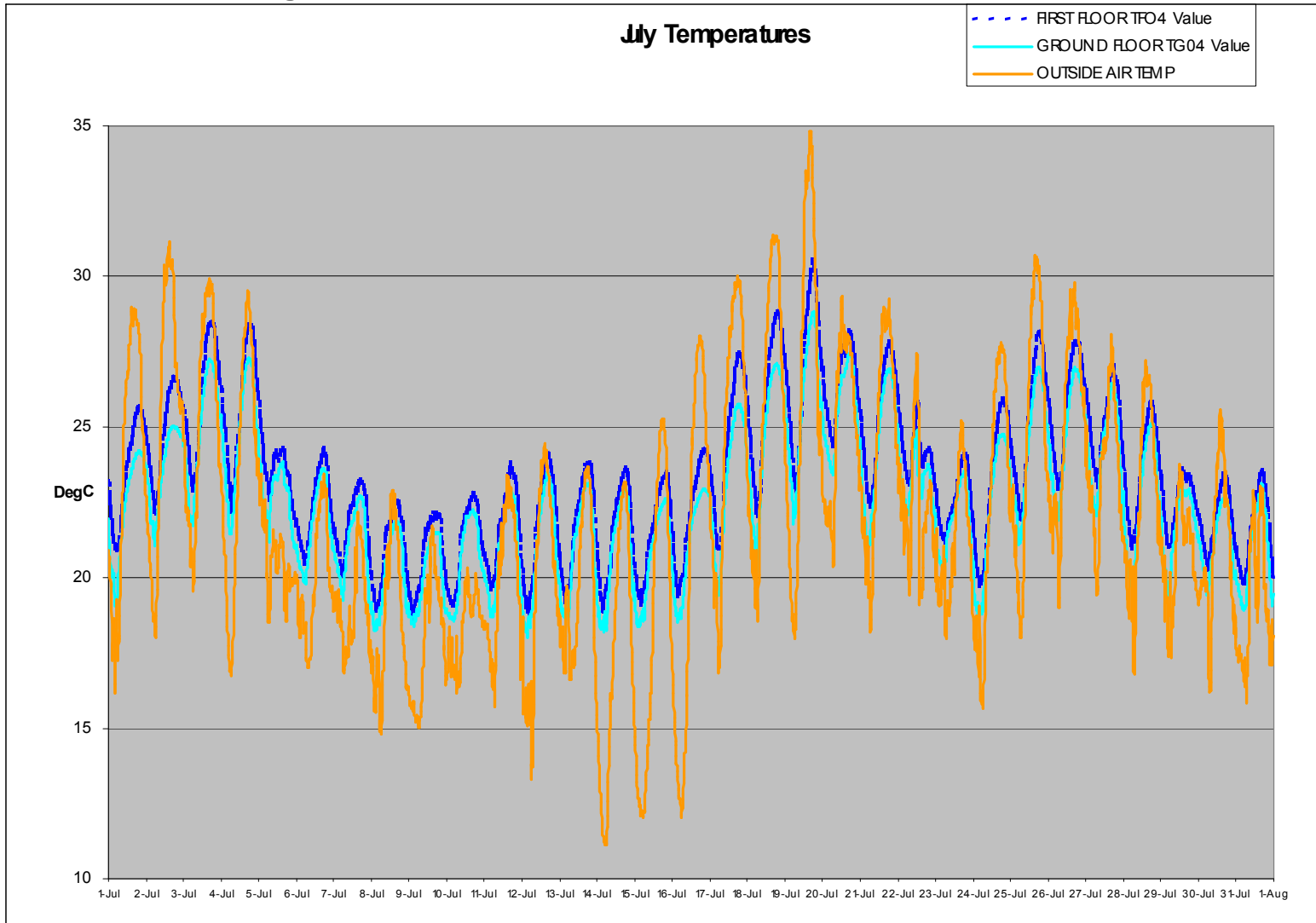
Thermal Targets



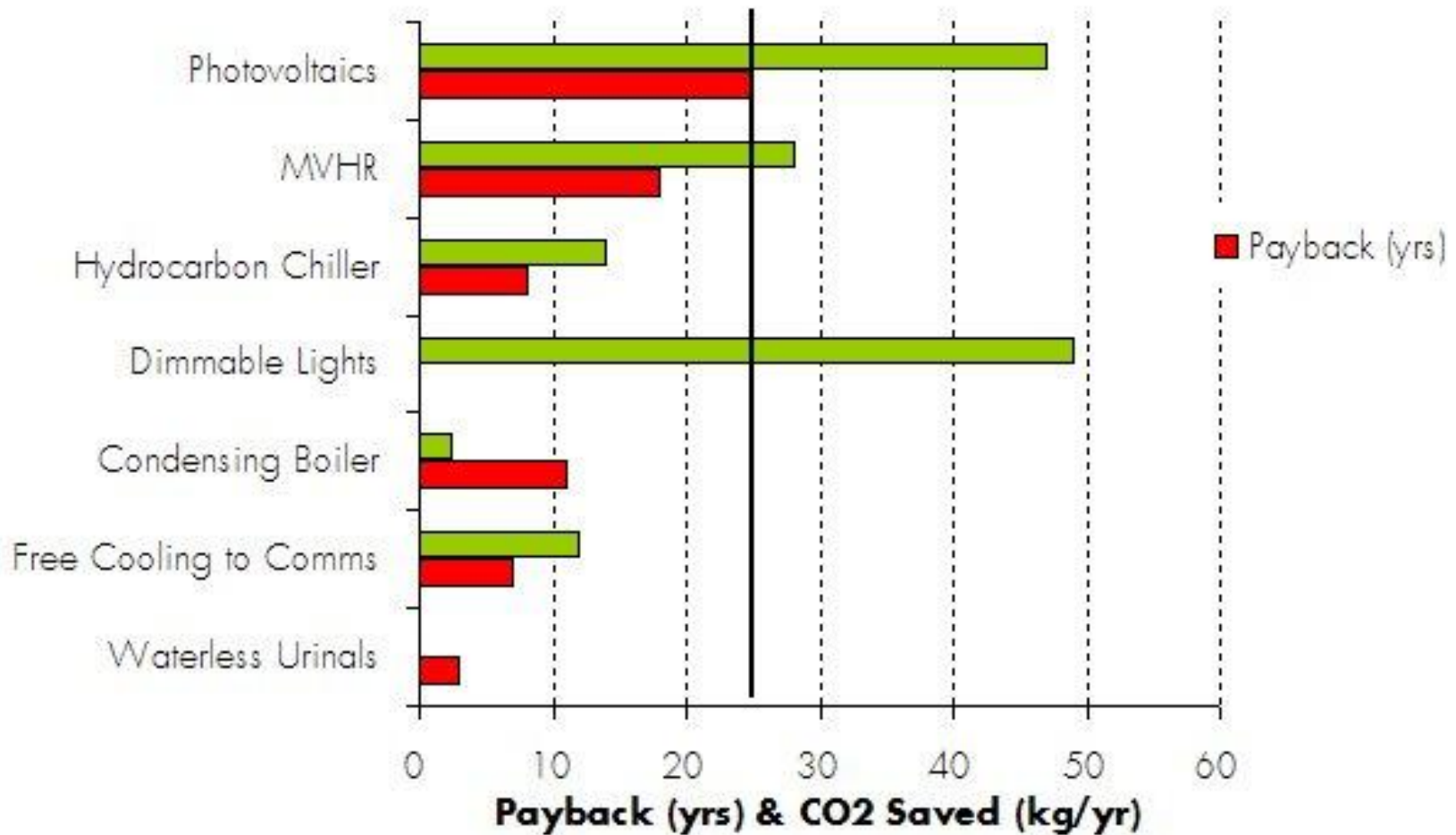
The Last Year



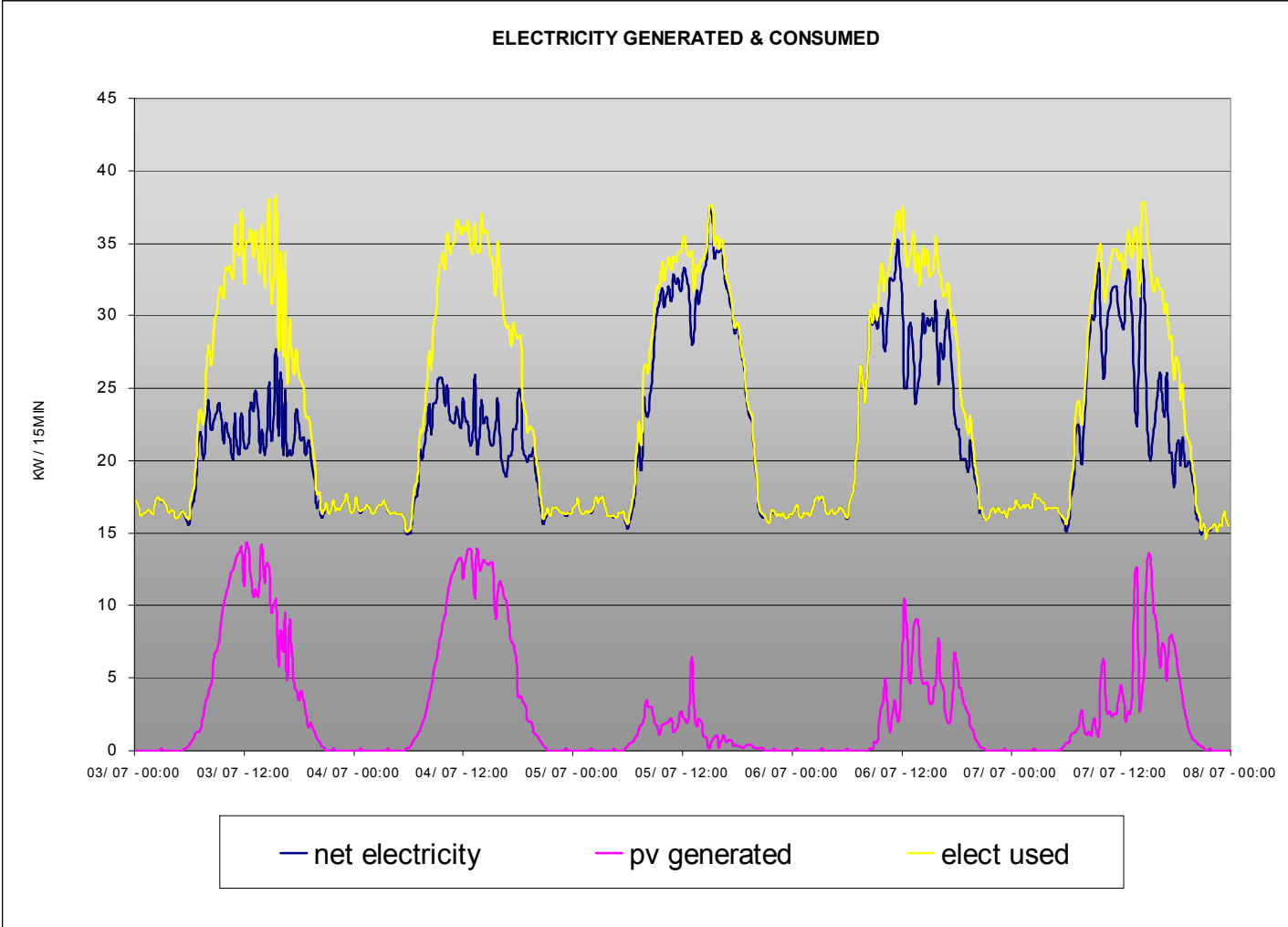
And last July....



Sustainable Options Payback Analysis

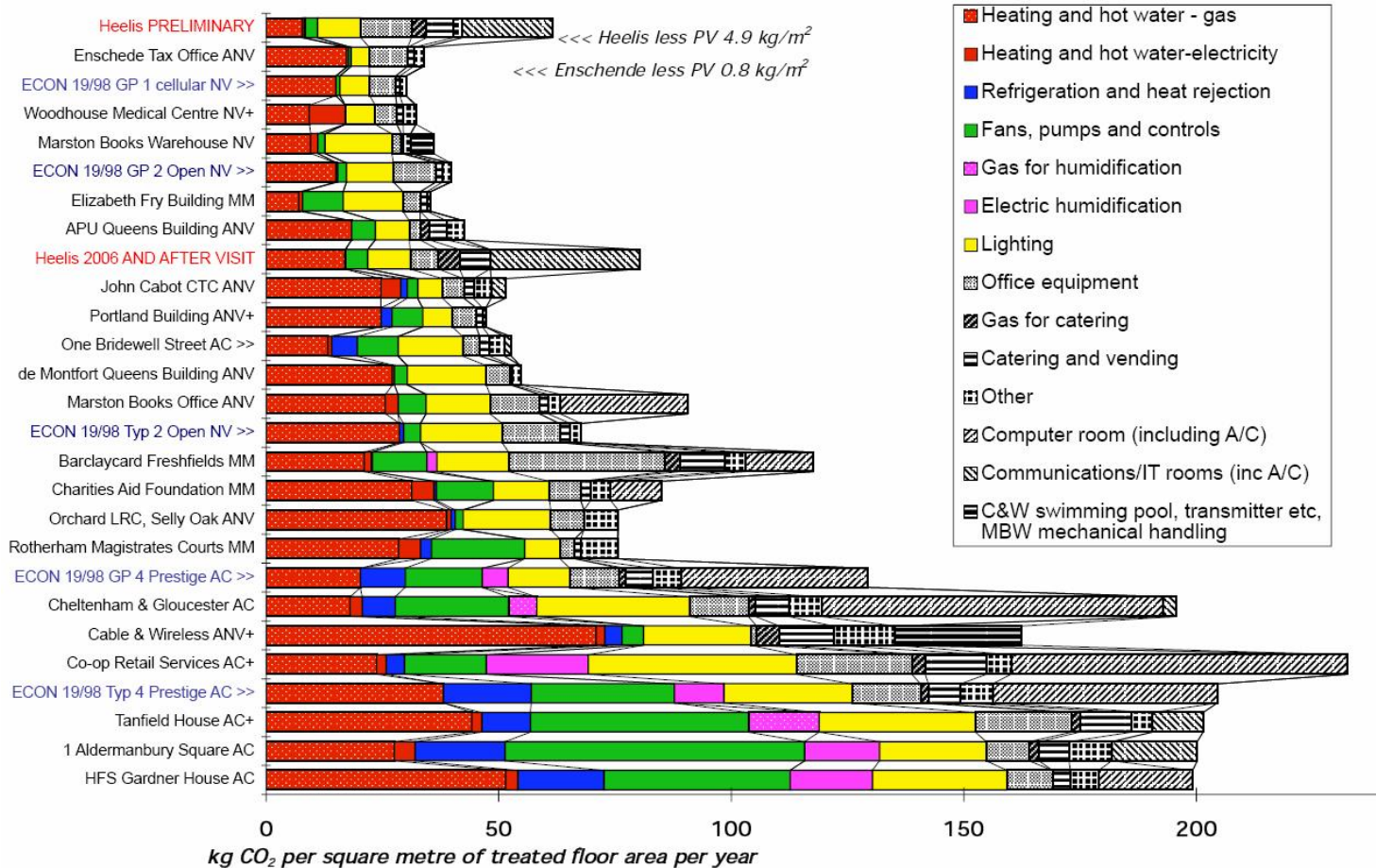


PV Array- Energy Generated



Post Occupancy Analysis

Annual CO₂/m²



BREEAM

