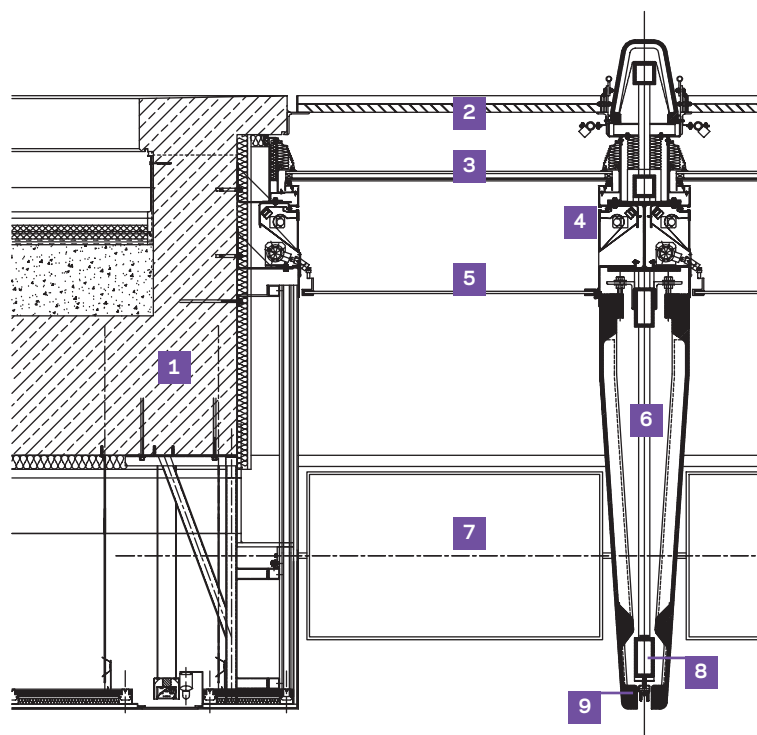
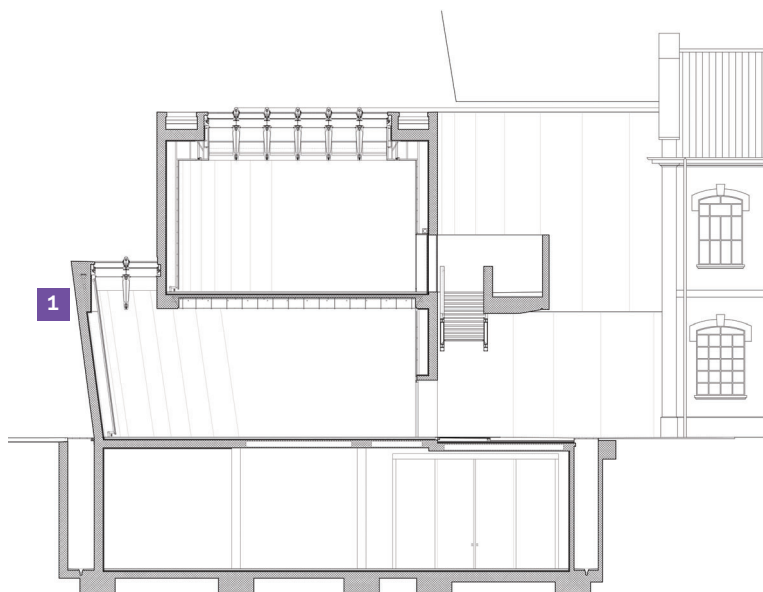


# Cross-section through galleries showing glazed roof



Top right: A mock-up of the glazed roof system of adjustable louvres and downstand ribs was built at the subcontractor's works near Venice

Above right: The steel frames of the longitudinal roof ribs. They are to be faced in glass-reinforced cement panels

## Detail of glazed roof system

- 1 Insitu concrete frame
- 2 Fixed external louvres
- 3 Double-glazed roof
- 4 Fluorescent light
- 5 Glazed ceiling
- 6 Downstand rib of steel frame faced in glass reinforced cement
- 7 Adjustable internal louvre
- 8 Cable conduit
- 9 Track for hanging screens or art objects