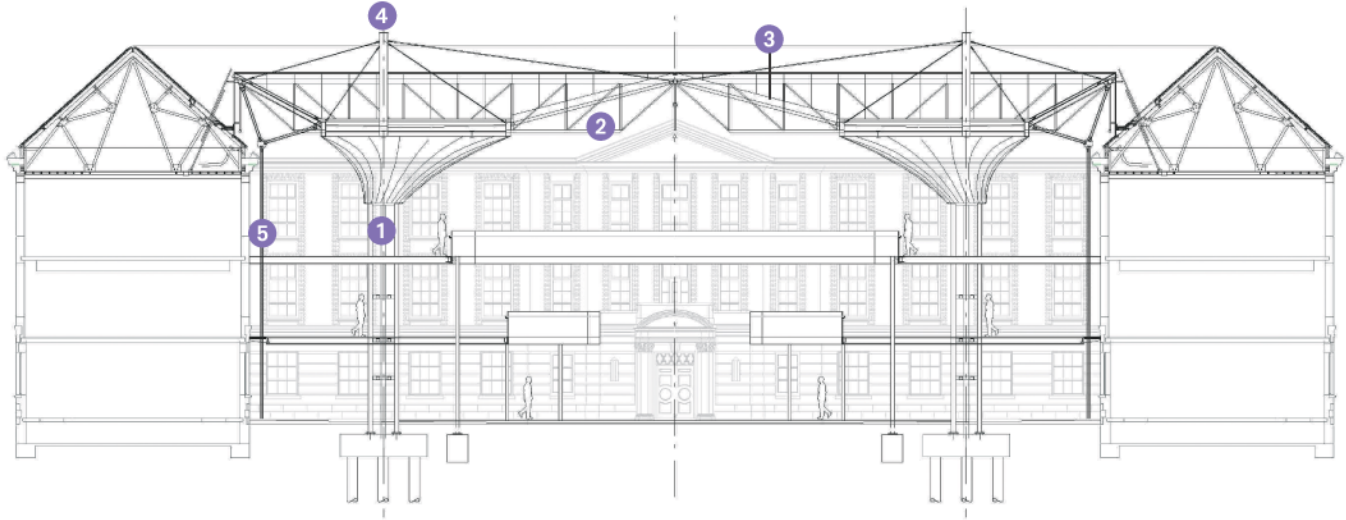


## The quadrangle in cross-section and plan



The roof is entirely supported by four columns ① in each corner of the quadrangle. But by having these columns in the corners, the project team had to find a way to support the roof in the middle. This central area is cantilevered from the columns via a series of perimeter beams that support trusses ② that join in the middle. The columns also support beams ③ that alternate with the perimeter-supported trusses and also join in the middle. These secondary beams are stayed with cables ④ attached to masts on top of the columns. Finally, tie rods ⑤ are used at the edges of the structure to restrain it so it doesn't tip into the middle of the courtyard. The glazing is supported by the perimeter trusses and the central beams so no weight is transferred to the original building.