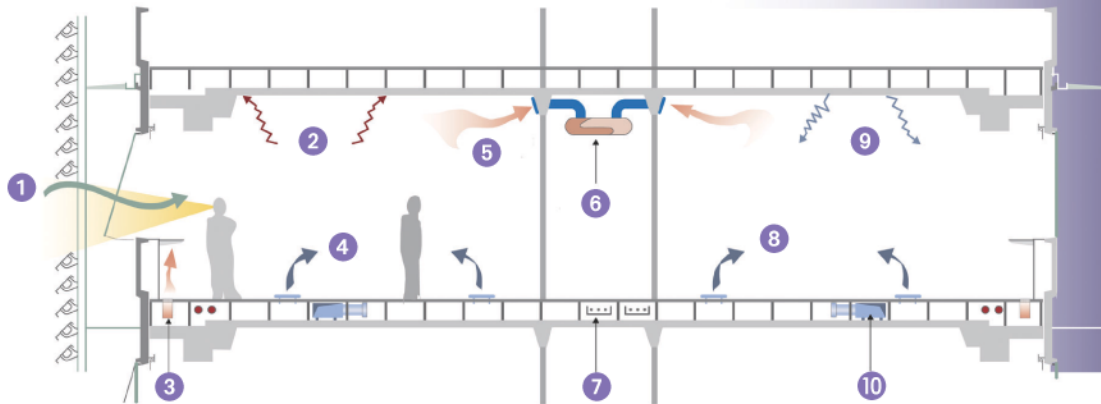


Section through law court offices



- 1 Natural ventilation under occupant control
- 2 Heat absorbed by exposed concrete slab
- 3 Perimeter trench heating
- 4 Floor supply ventilation
- 5 High level extract
- 6 Exposed oval extract duct in corridor
- 7 IT and electrical trays
- 8 Increased ventilation rate
- 9 Slab cooled at night
- 10 Supply air duct in raised floor