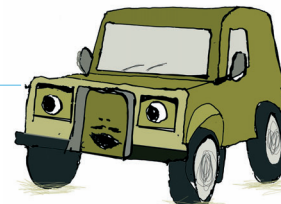


# TOP 100 ARCHITECTS

| Rank |      | Practice                    | Architectural staff |                      |               |             | Total UK chartered staff |       | Total UK staff |        | Offices |           |
|------|------|-----------------------------|---------------------|----------------------|---------------|-------------|--------------------------|-------|----------------|--------|---------|-----------|
| 2006 | 2005 |                             | Total               | Chartered architects | Technologists | Technicians | 2006                     | 2005  | 2006           | 2005   | UK      | Worldwide |
| 1    | 1    | Building Design Partnership | 611                 | 374                  | na            | 237         | 517                      | 484   | 1,052          | 1,019  | 9       | 13        |
| 2    | -    | SMC Group                   | 361                 | 252                  | 9             | 109         | 252                      | 71    | 422            | 157    | 16      | 20        |
| 3    | 6    | Capita Symonds              | 505                 | 235                  | na            | 270         | 1,373                    | 1,246 | 3,568          | 3,111  | 40      | 41        |
| 4    | -    | Aedas                       | 440                 | 220                  | 30            | 220         | 255                      | 229   | 653            | 589    | 11      | 24        |
| 5    | 2    | Atkins                      | 278                 | 195                  | 0             | 83          | 5,807                    | 5,701 | 11,372         | 11,197 | 160     | 240       |
| 6    | 4    | Nightingale Associates      | 265                 | 180                  | na            | 85          | 180                      | 175   | 290            | 283    | 11      | 12        |
| 7    | 3    | Foster and Partners         | 535                 | 163                  | 0             | 372         | 163                      | 193   | 694            | 566    | 1       | 5         |
| 8    | 5    | HOK/HOK Sport               | 246                 | 161                  | 2             | 85          | 161                      | 160   | 328            | 303    | 2       | 24        |
| 9    | 33   | Benoy                       | 185                 | 157                  | 36            | 28          | 157                      | na    | 207            | 167    | 2       | 3         |
| 10   | 7    | PRP Architects              | 242                 | 132                  | na            | 110         | 153                      | 144   | 325            | 321    | 4       | 4         |
| 11   | 9    | Broadway Malyan             | 285                 | 122                  | 7             | 163         | 187                      | 168   | 406            | 393    | 7       | 10        |
| 12   | 12=  | Keppie Design               | 179                 | 121                  | 52            | 58          | 121                      | 75    | 212            | 186    | 6       | 6         |
| 13   | 10   | Sheppard Robson             | 264                 | 112                  | 3             | 152         | 114                      | 103   | 313            | 268    | 2       | 2         |
| 14   | 8    | Reid Architecture           | 195                 | 111                  | na            | 84          | 111                      | 109   | 216            | 186    | 3       | 10        |
| 15   | 11   | Allies and Morrison         | 169                 | 98                   | 0             | 71          | 98                       | 79    | 221            | 207    | 1       | 1         |
| 16   | 23   | Lewis & Hickey              | 137                 | 90                   | na            | 47          | 116                      | 83    | 223            | 208    | 4       | 6         |
| 17   | 14   | Chapman Taylor              | 164                 | 79                   | na            | 85          | 80                       | 76    | 199            | 194    | 2       | 9         |
| 18   | -    | Cooper Cromar               | 80                  | 76                   | 39            | 4           | 78                       | 80    | 90             | 93     | 2       | 2         |
| 19   | 15=  | Stride Treglown             | 75                  | 75                   | na            | 79          | 96                       | 87    | 201            | 208    | 5       | 5         |
| 20   | -    | Pascall & Watson            | 146                 | 74                   | 2             | 72          | 74                       | 67    | 170            | 145    | 2       | 3         |
| 21=  | 12=  | Aukett Fitzroy Robinson     | 131                 | 73                   | 4             | 58          | 73                       | 81    | 164            | 177    | 4       | 10        |
| 21=  | -    | Austin-Smith Lord           | 94                  | 73                   | 0             | 21          | 73                       | 59    | 131            | 119    | 4       | 4         |
| 23   | -    | EPR Architects              | 114                 | 69                   | 6             | 45          | 70                       | 67    | 135            | 132    | 1       | 1         |
| 24   | -    | Scott Brownrigg             | 112                 | 66                   | 2             | 46          | 75                       | 72    | 173            | 130    | 4       | 4         |
| 25   | 17   | Kohn Pedersen Fox           | 134                 | 63                   | na            | 71          | 63                       | 39    | 183            | 123    | 1       | 3         |
| 26=  | -    | Purcell Miller Tritton      | 92                  | 59                   | 17            | 33          | 61                       | 50    | 139            | 104    | 8       | 8         |
| 26=  | 19   | Feilden Clegg Bradley       | 93                  | 59                   | na            | 34          | 59                       | 60    | 120            | 111    | 2       | 2         |
| 28   | 36=  | jmarchitects                | 129                 | 58                   | 0             | 71          | 58                       | 56    | 145            | 142    | 5       | 5         |
| 29   | 21   | Fairhursts Design Group     | 63                  | 55                   | na            | 8           | 55                       | 55    | 72             | 72     | 2       | 5         |
| 30   | 46=  | Holder Mathias Architects   | 84                  | 54                   | 16            | 30          | 55                       | 45    | 103            | 93     | 2       | 3         |
| 31   | 26   | RHWL Partnership            | 89                  | 51                   | 6             | 38          | 51                       | 58    | 120            | 128    | 1       | 2         |
| 32   | 25   | Squire & Partners           | 74                  | 49                   | 0             | 25          | 49                       | 47    | 88             | 75     | 1       | 1         |
| 33   | -    | RyderHKS                    | 117                 | 47                   | 9             | 70          | 52                       | 64    | 143            | na     | 2       | 2         |
| 34   | 30=  | Hunter & Partners           | 84                  | 46                   | na            | 38          | 82                       | 79    | 145            | 139    | 3       | 5         |
| 35=  | 24   | TPS                         | 63                  | 44                   | na            | 19          | 325                      | 274   | 417            | 396    | 7       | 7         |
| 35=  | -    | Anshen Dyer                 | 88                  | 44                   | 1             | 44          | 44                       | 0     | 126            | 0      | 1       | 4         |
| 35=  | -    | HTA Architects              | 74                  | 44                   | 4             | 30          | 44                       | 29    | 96             | 58     | 2       | 2         |
| 38   | 32   | Wilkinson Eyre Architects   | 85                  | 43                   | na            | 42          | 43                       | 39    | 106            | 87     | 1       | 1         |
| 39=  | 33=  | Hamiltons Architects        | 141                 | 42                   | na            | 99          | 42                       | 61    | 155            | 127    | 2       | 3         |
| 39=  | 36=  | John McAslan & Partners     | 79                  | 42                   | 0             | 37          | 42                       | 35    | 87             | 70     | 2       | 2         |
| 41   | 66=  | Make                        | 79                  | 40                   | na            | 39          | 40                       | 22    | 94             | 48     | 3       | 3         |
| 42=  | 50=  | Bond Bryan                  | 75                  | 39                   | 3             | 36          | 52                       | 46    | 111            | 96     | 1       | 1         |
| 42=  | -    | Pozzoni Group               | 53                  | 39                   | 10            | 14          | 46                       | 40    | 78             | 68     | 2       | 2         |
| 42=  | 36=  | Hawkins Brown               | 59                  | 39                   | na            | 20          | 39                       | 35    | 69             | 56     | 1       | 1         |
| 42=  | -    | Sidell Gibson Architects    | 61                  | 39                   | 0             | 22          | 39                       | 0     | 72             | 0      | 1       | 1         |
| 46   | 36=  | Jestico + Whites            | 67                  | 38                   | 0             | 29          | 38                       | 36    | 85             | 80     | 1       | 2         |
| 47=  | -    | Llewelyn Davies Yeang       | 62                  | 35                   | 6             | 27          | 55                       | 0     | 137            | 0      | 3       | 3         |
| 47=  | -    | Haskoll                     | 96                  | 35                   | 0             | 61          | 36                       | 30    | 106            | 95     | 3       | 5         |
| 49=  | 46=  | John Thompson & Partners    | 55                  | 34                   | 0             | 21          | 34                       | 31    | 71             | 64     | 2       | 3         |
| 49=  | 54=  | Lyons Sleeman Hoare         | 89                  | 34                   | na            | 55          | 34                       | 29    | 109            | 102    | 1       | 1         |
| 49=  | 39   | RH Partnership Architects   | 41                  | 34                   | na            | 7           | 34                       | 33    | 45             | 43     | 2       | 2         |



# TOP 100 ARCHITECTS

| Rank |      | Practice                       | Architectural staff |                      |               |             | Total UK chartered staff |       | Total UK staff |       | Offices |           |
|------|------|--------------------------------|---------------------|----------------------|---------------|-------------|--------------------------|-------|----------------|-------|---------|-----------|
| 2006 | 2005 |                                | Total               | Chartered architects | Technologists | Technicians | 2006                     | 2005  | 2006           | 2005  | UK      | Worldwide |
| 52   | 33=  | Parr Architects                | 73                  | 33                   | 2             | 40          | 35                       | 39    | 90             | 97    | 5       | 5         |
| 53=  | 40=  | GHM Consultancy Group          | 41                  | 32                   | 0             | 9           | 53                       | 53    | 74             | 74    | 3       | 3         |
| 53=  | 46=  | Hadfield Cawkwell Davidson     | 65                  | 32                   | 0             | 33          | 40                       | 39    | 91             | 88    | 1       | 1         |
| 53=  | 40=  | YRM                            | 50                  | 32                   | na            | 18          | 32                       | 32    | 61             | 56    | 1       | 1         |
| 56=  | -    | Feilden & Mawson               | 45                  | 31                   | 8             | 14          | 37                       | 29    | 65             | 59    | 3       | 4         |
| 56=  | -    | Avanti Architects              | 48                  | 31                   | 0             | 17          | 31                       | 28    | 61             | 46    | 1       | 1         |
| 58=  | -    | Buttress Fuller Alsop Williams | 44                  | 30                   | 6             | 14          | 36                       | 33    | 53             | 44    | 1       | 1         |
| 58=  | 56=  | Tooley and Foster Partnership  | 39                  | 30                   | 2             | 9           | 32                       | 30    | 53             | 49    | 2       | 3         |
| 60=  | -    | Mouchel Parkman                | 63                  | 29                   | 2             | 34          | 1,293                    | 1,178 | 5,507          | 4,959 | 94      | 99        |
| 60=  | 59=  | Assael Architecture            | 47                  | 29                   | 0             | 18          | 29                       | 26    | 72             | 62    | 1       | 1         |
| 62=  | 56=  | The Harris Partnership         | 60                  | 28                   | na            | 32          | 65                       | 65    | 119            | 119   | 4       | 4         |
| 62=  | -    | bptw partnership               | 62                  | 28                   | 28            | 34          | 32                       | 27    | 85             | 75    | 2       | 2         |
| 62=  | -    | Powell Dobson                  | 89                  | 28                   | na            | 61          | 28                       | 25    | 111            | 90    | 2       | 2         |
| 65=  | 65   | Parsons Brinckerhoff           | 41                  | 27                   | na            | 14          | 650                      | 634   | 1,447          | 1,359 | 19      | 150       |
| 65=  | 54=  | Acanthus LW Architects         | 27                  | 27                   | na            | 8           | 27                       | 29    | 40             | 42    | 1       | 1         |
| 65=  | 50=  | ORMS Architects                | 39                  | 27                   | 0             | 12          | 27                       | 25    | 42             | 40    | 1       | 1         |
| 65=  | 63=  | Architecture PLB               | 37                  | 27                   | 0             | 10          | 22                       | 24    | 40             | 42    | 2       | 2         |
| 69=  | 59=  | Holmes Partnership             | 55                  | 26                   | na            | 29          | 26                       | 25    | 62             | 56    | 2       | 2         |
| 69=  | 58   | Watkins Gray International     | 68                  | 26                   | 0             | 42          | 26                       | 27    | 83             | 83    | 2       | 2         |
| 71=  | 63=  | Jacobs Babtie                  | 25                  | 25                   | na            | na          | 1,190                    | 1,167 | 3,870          | 3,800 | 40      | 50        |
| 71=  | 70=  | Associated Architects          | 37                  | 25                   | 3             | 12          | 25                       | 24    | 46             | 42    | 1       | 1         |
| 71=  | -    | Jefferson Sheard               | 71                  | 25                   | na            | 46          | 25                       | 24    | 90             | 106   | 5       | 5         |
| 74   | -    | Pick Everard                   | 66                  | 24                   | na            | 42          | 97                       | 89    | 285            | 264   | 6       | 8         |
| 75=  | 66=  | Bailey Garner                  | 51                  | 23                   | 0             | 28          | 77                       | 75    | 214            | 225   | 2       | 2         |
| 75=  | 72=  | Stubbs Rich                    | 42                  | 23                   | na            | 19          | 23                       | 18    | 58             | 48    | 2       | 2         |
| 77=  | 83=  | Calfordseaden                  | 37                  | 22                   | 7             | 15          | 77                       | 66    | 204            | 206   | 4       | 4         |
| 77=  | 72=  | KSS Design Group               | 43                  | 22                   | na            | 21          | 22                       | 24    | 60             | 47    | 1       | 1         |
| 79=  | -    | Arup                           | 75                  | 21                   | na            | 54          | 1,165                    | 1,074 | 3,417          | 3,220 | 18      | 74        |
| 79=  | 68   | B3 Burges                      | 58                  | 21                   | 5             | 37          | 35                       | 35    | 99             | 95    | 5       | 6         |
| 79=  | 69   | LHC Group                      | 38                  | 21                   | 2             | 17          | 30                       | 25    | 62             | 58    | 3       | 3         |
| 79=  | 83=  | Robert Adam Architects         | 52                  | 21                   | 9             | 31          | 24                       | 23    | 69             | 64    | 2       | 2         |
| 83   | 72=  | Woods Bagot                    | 34                  | 20                   | na            | 14          | 20                       | 18    | 42             | 41    | 1       | 10        |
| 84=  | -    | Edward Cullinan Architects     | 34                  | 18                   | na            | 16          | 19                       | 19    | 40             | 39    | 1       | 1         |
| 84=  | 76   | P&HS Architects                | 45                  | 18                   | na            | 27          | 18                       | 17    | 51             | 49    | 2       | 2         |
| 86   | 80=  | Frankham Consultancy Group     | 29                  | 17                   | 4             | 12          | 92                       | 88    | 179            | 177   | 4       | 4         |
| 87=  | 77=  | McBains Cooper                 | 40                  | 16                   | 0             | 24          | 134                      | 134   | 234            | 225   | 7       | 8         |
| 87=  | 70=  | Shepherd Epstein Hunter        | 16                  | 16                   | 0             | 0           | 31                       | 33    | 36             | 38    | 1       | 1         |
| 87=  | 72=  | Ratcliffe Groves Partnership   | 70                  | 16                   | na            | 54          | 19                       | 14    | 86             | 68    | 4       | 4         |
| 87=  | 83=  | John Robertson Architects      | 29                  | 16                   | 0             | 13          | 16                       | 13    | 37             | 42    | 1       | 1         |
| 87=  | 77=  | Miller Bourne                  | 26                  | 16                   | 1             | 10          | 16                       | 16    | 31             | 31    | 1       | 1         |
| 92   | 82   | Mace                           | 15                  | 15                   | na            | na          | 686                      | 589   | 1,374          | 1,160 | 10      | 23        |
| 93=  | -    | Dearle & Henderson             | 21                  | 14                   | 2             | 7           | 137                      | 126   | 205            | 199   | 8       | 8         |
| 93=  | 88   | Kendall Kingscott              | 28                  | 14                   | 4             | 14          | 34                       | 30    | 79             | 74    | 4       | 4         |
| 93=  | 83=  | Quattro Design Architects      | 35                  | 14                   | 2             | 21          | 16                       | 14    | 42             | 39    | 2       | 2         |
| 96=  | -    | Lend Lease Projects            | 25                  | 13                   | 1             | 12          | 160                      | 0     | 330            | 0     | 7       | 8         |
| 96=  | 89   | Ingleton Wood                  | 13                  | 13                   | 3             | 0           | 61                       | 50    | 111            | 98    | 7       | 7         |
| 96=  | -    | Househam Henderson             | 27                  | 13                   | 1             | 14          | 14                       | 14    | 29             | 27    | 2       | 5         |
| 96=  | -    | Race Cottam Associates         | 30                  | 13                   | 1             | 17          | 14                       | 13    | 39             | 32    | 2       | 2         |
| 100  | 87   | ttsp                           | 45                  | 12                   | na            | 33          | 14                       | 12    | 57             | 48    | 1       | 2         |